

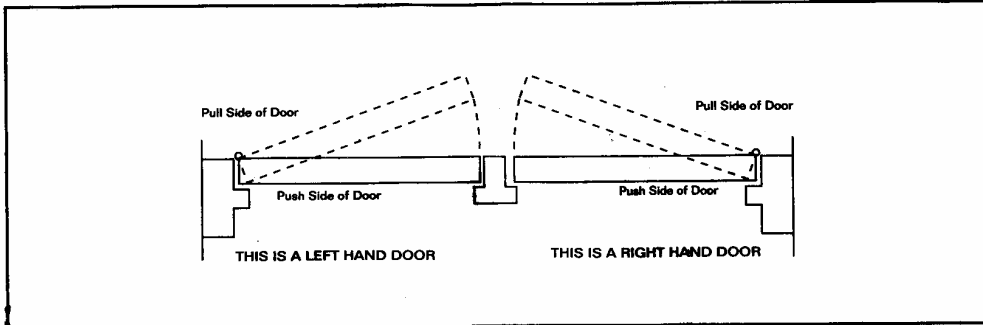
Taymor

DOOR CLOSER

600/620/1690/690 INSTALLATION INSTRUCTIONS

NO HOLD-OPEN

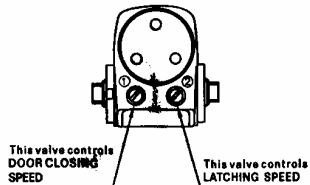
■ CHART TO DETERMINE HAND OF DOOR



■ FINAL ADJUSTMENT AND REGULATING PROCEDURES

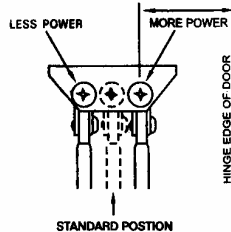
TO REGULATE DOOR CLOSING SPEED AND LATCHING SPEED

Turn appropriate Speed Regulating valve (as illustrated) clockwise to slow down or counter clockwise to speed up as desired



ADJUSTING ARM SHOE FOR CLOSING POWER

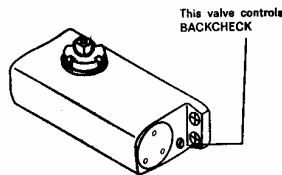
Move foot pivot to hole as illustrated below



FOR MODELS HAVING BACK CHECK

The intensity of Backcheck Action is regulated, by valve as shown. Turn clockwise to increase—or counter clockwise to decrease checking.

CAUTION: SET VALVE FOR A SLIGHT CUSHIONING EFFECT IT IS DAMAGING TO THE CLOSER IF THE CHECKING ACTION IS TOO ABRUPT. BACKCHECK SHOULD NEVER BE USED IN LIEU OF A DOOR STOP



TAYMOR INDUSTRIES LTD

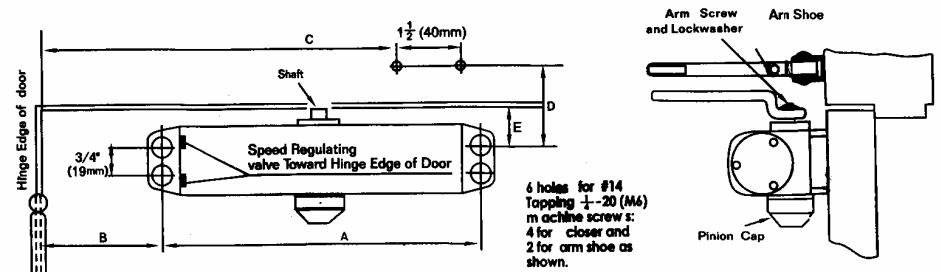
VANCOUVER
P.O. Box 2347 New
Westminster, BC V3L 5B6
Tel: (604) 540-9523
Fax: (604) 540-2153

TORONTO
CENTRES DE DISTRIBUTION
205 Limestone Crescent
Downsview, ON M3J 2R1
Tel: (416) 661-0292
Fax: (416) 661-2079

HAYWARD
1586 Zephyr Avenue
Hayward, CA 94544
Tel: (510) 429-0888
Fax: (510) 429-0397

STANDARD INSTALLATION CLOSER MOUNTED ON DOOR ON PULL SIDE

THIS ILLUSTRATION COVERS REGULAR ARM INSTALLATIONS TO 180° OPENINGS

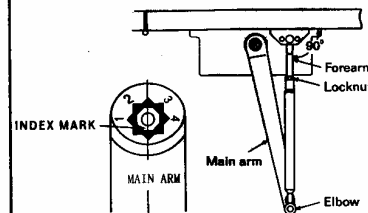


RIGHT HAND DOOR ILLUSTRATED.
Same dimensions apply for left Hand Door
measured from hinge edge

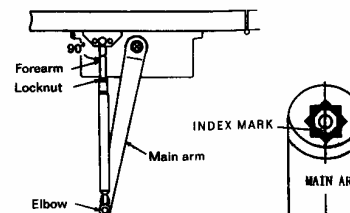
INSTALLING DIMENSIONS

DIMENSIONS	MAXIMUM DOOR WEIGHT (LBS/Kg)	A	FOR OPENING TO 120°		FOR OPENING TO 120°-180°		D	E
			B	C	B	C		
602	96 LBS (45 Kg)	6 5/8" (168 mm)	3 3/4" (95 mm)	9 7/16" (240 mm)	2 9/16" (65 mm)	8 1/4" (210 mm)	2 1/4" (57 mm)	7/8" (22 mm)
603	132 LBS (60 Kg)	8 1/8" (206 mm)	4 5/16" (110 mm)	10 5/8" (270 mm)	3 1/8" (80 mm)	9 7/16" (240 mm)	2 1/4" (57 mm)	1" (25 mm)
604	176 LBS (80 Kg)	9 1/16" (230 mm)	4 5/16" (110 mm)	10 5/8" (270 mm)	3 1/8" (80 mm)	9 7/16" (240 mm)	2 1/4" (57 mm)	1" (25 mm)
696 (BC)	220 LBS (100 Kg)	9 1/16" (230 mm)	4 5/16" (110 mm)	10 5/8" (270 mm)	3 1/8" (80 mm)	9 7/16" (240 mm)	2 1/4" (57 mm)	1" (25 mm)

POSITION OF ARMS AND INDEX SETTINGS



Right hand door
ILLUSTRATION "A"



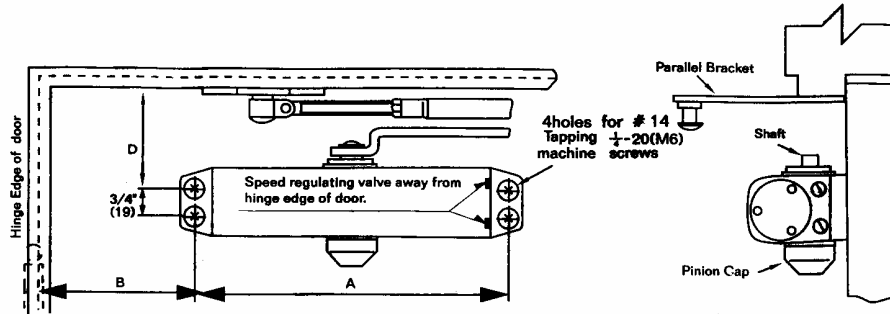
Left hand door
ILLUSTRATION "B"

INSTALLATION INSTRUCTIONS

- Select degree of opening and use dimensions shown in above chart to mark four holes on door for closer and two holes on frame for arm shoe.
- Drill pilot holes in door and frame for #14 Tapping screws or drill and tap for 1/4"-20 (M6) machine screws.
- Mount closer on door WITH SPEED REGULATING VALVE TOWARD HINGE EDGE.
- Place main arm on shaft on top of closer at proper index mark as illustrated. FOR RIGHT HAND DOOR (Illustration "A") FOR LEFT HAND DOOR (Illustration "B"). Tighten arm screw with lockwasher securely.
- Attach the arm shoe of the forearm to the frame.
- Adjust length of forearm so when it is attached to main arm it will be at a right angle (90°) to door when door is closed and assemble at elbow then tighten locknut.
- Snap pinion cap over shaft at bottom of closer.

PARALLEL ARM INSTALLATION CLOSER MOUNTED ON DOOR ON PUSH SIDE

THIS ILLUSTRATION COVERS REGULAR PARALLEL ARM INSTALLATIONS TO 180° OPENINGS.



INSTALLATION INSTRUCTIONS

LEFT HAND DOOR ILLUSTRATED.
Same dimensions apply for Right Hand Door
measured from hinge edge.

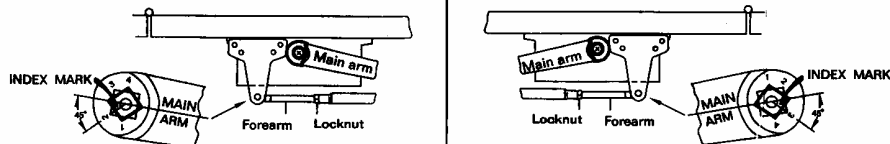
1. Select degree of opening and use dimensions shown in above chart to mark four holes on door for closer and four holes on frame for parallel bracket.
2. Drill pilot holes in door and frame for #14 Tapping screws or drill and tap for 1/4-20(M6) machine screws.
3. Mount closer on door WITH SPEED REGULATING VALVE AWAY FROM HINGE EDGE.
4. Attach parallel bracket to door stop as illustrated.
5. Using a wrench on the square shaft at bottom of closer, rotate shaft approximately 45° toward hinge edge of door. Hold and place main arm on shaft on top of closer at proper index mark as illustrated. FOR LEFT HAND DOOR (Illustration "A"). FOR RIGHT HAND DOOR (Illustration "B"). Tighten arm screw with lockwasher securely.
6. Remove the arm shoe from the forearm (arm shoe is not used in this application) and place forearm on parallel bracket stud and tighten screw securely.
7. Adjust length of forearm so when it is attached to main arm, the main arm will be slightly away from parallel with closed door, and assemble at elbow then tighten locknut.
8. Snap pinion cap over shaft at bottom of closer.

(mm)

INSTALLING DIMENSIONS

MODELS	MAXIMUM DOOR WEIGHT (LBS/Kg)	A	B	C	D
602	99LBS (45Kg)	6 5/8" (168 mm)	3 9/16" (90 mm)	4 3/4" (120 mm)	2 3/4" (70 mm)
622	100LBS (45Kg)	6 5/8" (168 mm)	3 9/16" (90 mm)	4 3/4" (120 mm)	2 3/4" (70 mm)
603	132LBS (60Kg)	8 1/8" (206 mm)	5 1/2" (140 mm)	6 11/16" (170 mm)	2 3/4" (70 mm)
623	132LBS (60Kg)	8 1/8" (206 mm)	5 1/2" (140 mm)	6 11/16" (170 mm)	2 3/4" (70 mm)
603(BC)	132LBS (60Kg)	8 1/8" (206 mm)	5 1/2" (140 mm)	6 11/16" (170 mm)	2 3/4" (70 mm)
604	175LBS (80Kg)	9 1/16" (230 mm)	4 3/4" (120 mm)	6 11/16" (170 mm)	2 3/4" (70 mm)
624	175LBS (80Kg)	9 1/16" (230 mm)	4 3/4" (120 mm)	6 11/16" (170 mm)	2 3/4" (70 mm)
604(BC)	175LBS (80Kg)	9 1/16" (230 mm)	4 3/4" (120 mm)	6 11/16" (170 mm)	2 3/4" (70 mm)
606(BC)	225LBS (100Kg)	9 1/16" (230 mm)	4 3/4" (120 mm)	6 11/16" (170 mm)	2 3/4" (70 mm)

POSITION OF ARMS AND INDEX SETTINGS



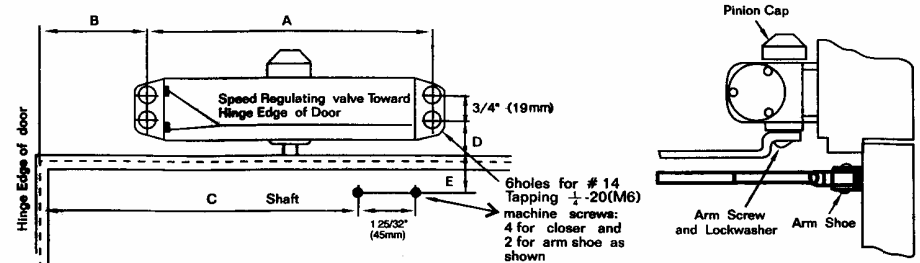
Left hand door
ILLUSTRATION "A"

Right hand door
ILLUSTRATION "B"

TOP JAMB INSTALLATION CLOSER MOUNTED ON TOP JAMB ON PUSH SIDE OF DOOR

THIS ILLUSTRATION COVERS REGULAR ARM INSTALLATIONS TO 180° OPENINGS.

Reveals of 2-3/4" (70mm) to 5" (127mm) require 'long Top Jamb' Forearm Extender Accessory and must be ordered extra.



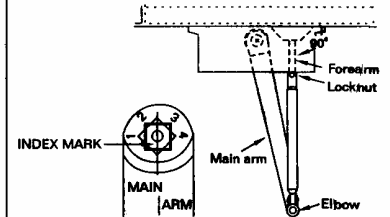
INSTALLING DIMENSIONS

MODELS	MAXIMUM DOOR WEIGHT (LBS/Kg)	A	FOR OPENING TO 120°		FOR OPENING TO 180°		D	E
			B	C	B	C		
602	100LBS (45kg)	6 5/8" (168mm)	3 9/4" (95mm)	9 7/16" (240mm)	2 9/16" (65mm)	8 5/16" (210mm)	7/8" (22mm)	1 3/8" (35mm)
622	100LBS (45kg)	6 5/8" (168mm)	3 9/4" (95mm)	9 7/16" (240mm)	2 9/16" (65mm)	8 5/16" (210mm)	7/8" (22mm)	1 3/8" (35mm)
603	132LBS (60kg)	8 1/8" (206mm)	4 5/16" (110mm)	10 5/8" (270mm)	3 5/32" (80mm)	9 7/16" (240mm)	7/8" (22mm)	1 3/8" (35mm)
623	132LBS (60kg)	8 1/8" (206mm)	4 5/16" (110mm)	10 5/8" (270mm)	3 5/32" (80mm)	9 7/16" (240mm)	7/8" (22mm)	1 3/8" (35mm)
603(BC)	132LBS (60kg)	8 1/8" (206mm)	4 5/16" (110mm)	10 5/8" (270mm)	3 5/32" (80mm)	9 7/16" (240mm)	7/8" (22mm)	1 3/8" (35mm)
604	175LBS (80kg)	9 1/16" (230mm)	4 5/16" (110mm)	10 5/8" (270mm)	3 5/32" (80mm)	9 7/16" (240mm)	7/8" (22mm)	1 3/8" (35mm)
624	175LBS (80kg)	9 1/16" (230mm)	4 5/16" (110mm)	10 5/8" (270mm)	3 5/32" (80mm)	9 7/16" (240mm)	7/8" (22mm)	1 3/8" (35mm)
604(BC)	175LBS (80kg)	9 1/16" (230mm)	4 5/16" (110mm)	10 5/8" (270mm)	3 5/32" (80mm)	9 7/16" (240mm)	7/8" (22mm)	1 3/8" (35mm)
606(BC)	225LBS (100kg)	9 1/16" (230mm)	4 5/16" (110mm)	10 5/8" (270mm)	3 5/32" (80mm)	9 7/16" (240mm)	7/8" (22mm)	1 3/8" (35mm)

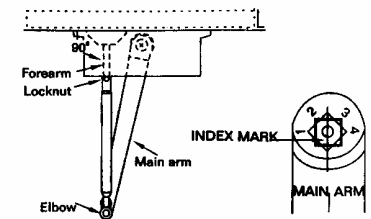
INSTALLATION INSTRUCTIONS

1. Select degree of opening and use dimensions shown in above chart to mark four holes on door for closer and two holes on door for arm shoe.
2. Drill pilot holes in door and frame for #14 Tapping screws or drill and tap for 1/4-20(M6) machine screws.
3. Mount closer on frame WITH SPEED REGULATING VALVE TOWARD HINGE EDGE.
4. Place main arm on shaft on bottom of closer at proper index mark as illustrated. FOR LEFT HAND DOOR (Illustration "A") FOR RIGHT HAND DOOR (Illustration "B"). Tighten arm screw with lockwasher securely.
5. Attach the arm shoe of the forearm to the door.
6. Adjust length of forearm so when it is attached to main arm it will be at a right angle (90°) to door when door is closed and assemble at elbow then tighten locknut.
7. Snap pinion cap over shaft at top of closer.

POSITION OF ARMS AND INDEX SETTINGS



Left hand door
ILLUSTRATION "A"



Right hand door
ILLUSTRATION "B"