

Suite Plans

Click on the links below to see floor plans of the various levels at THE PINNACLE...

Executive Levels

Floors 3-10

Floors 11-20

Premier Levels

Floors 21-26

Signature Levels

Floors 27-30

Landmark Levels

Floors 31 and 32

Pinnacle Levels

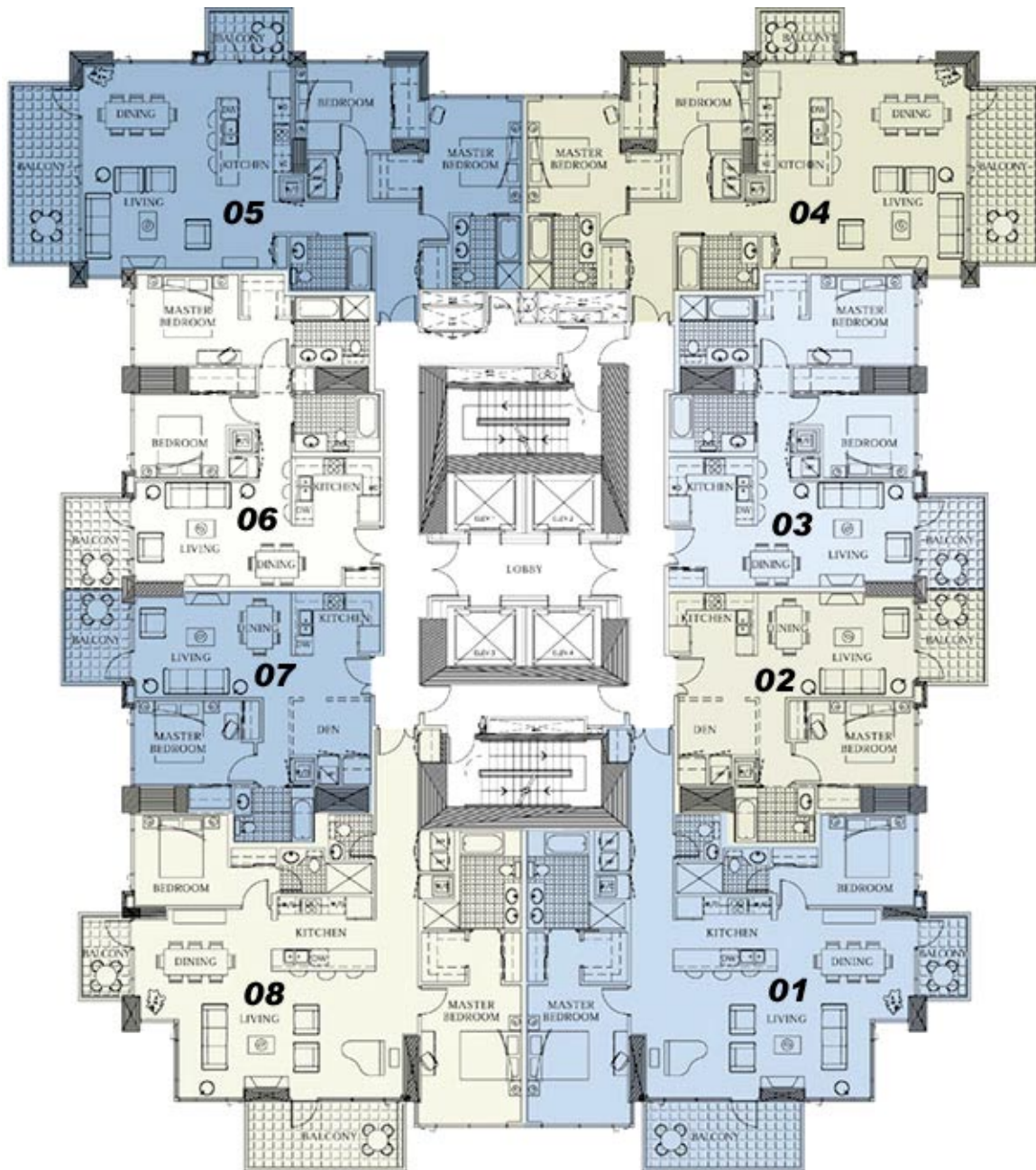
Floor 33

Floor 34

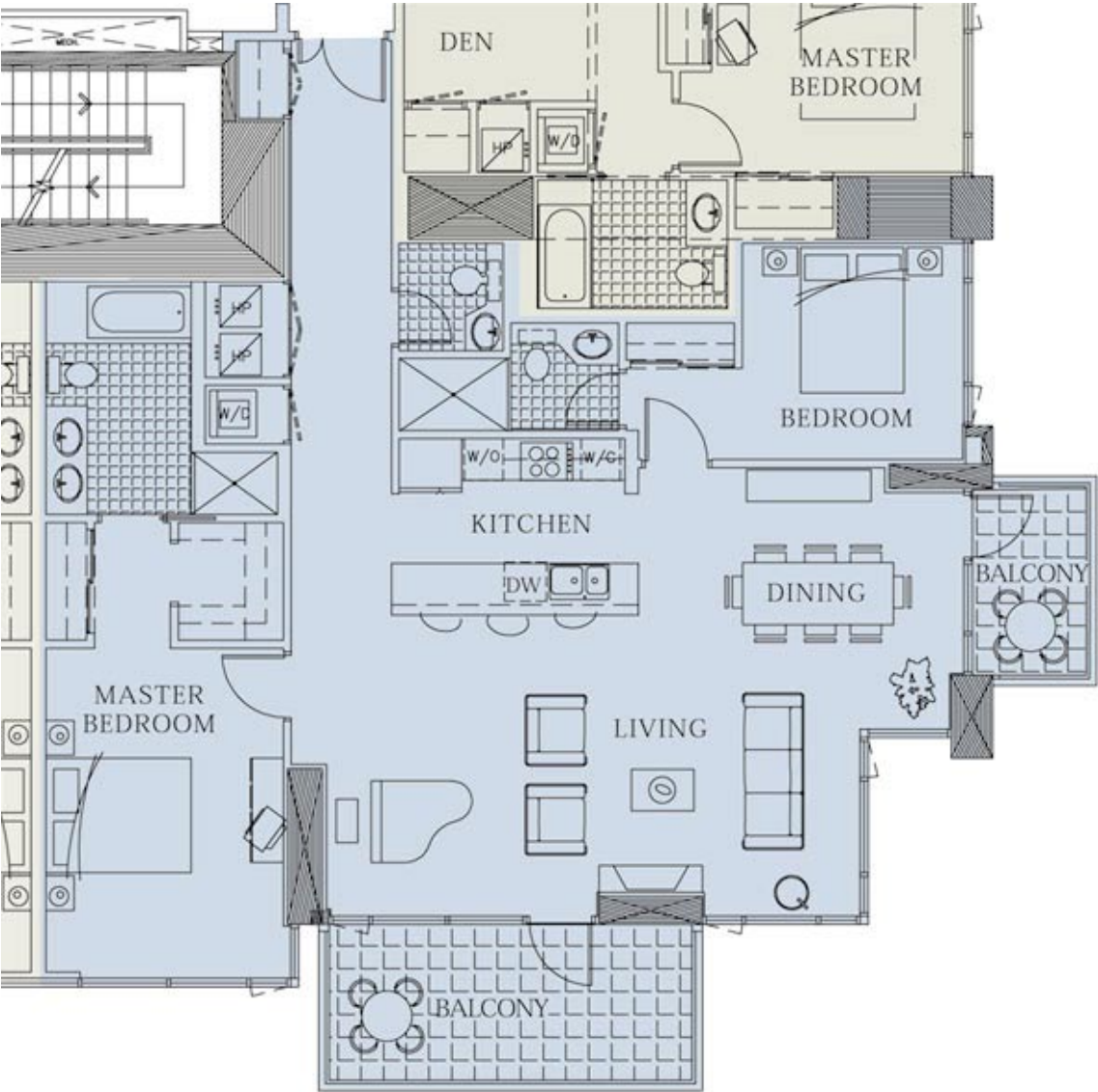
Floor 35/36

Executive Levels

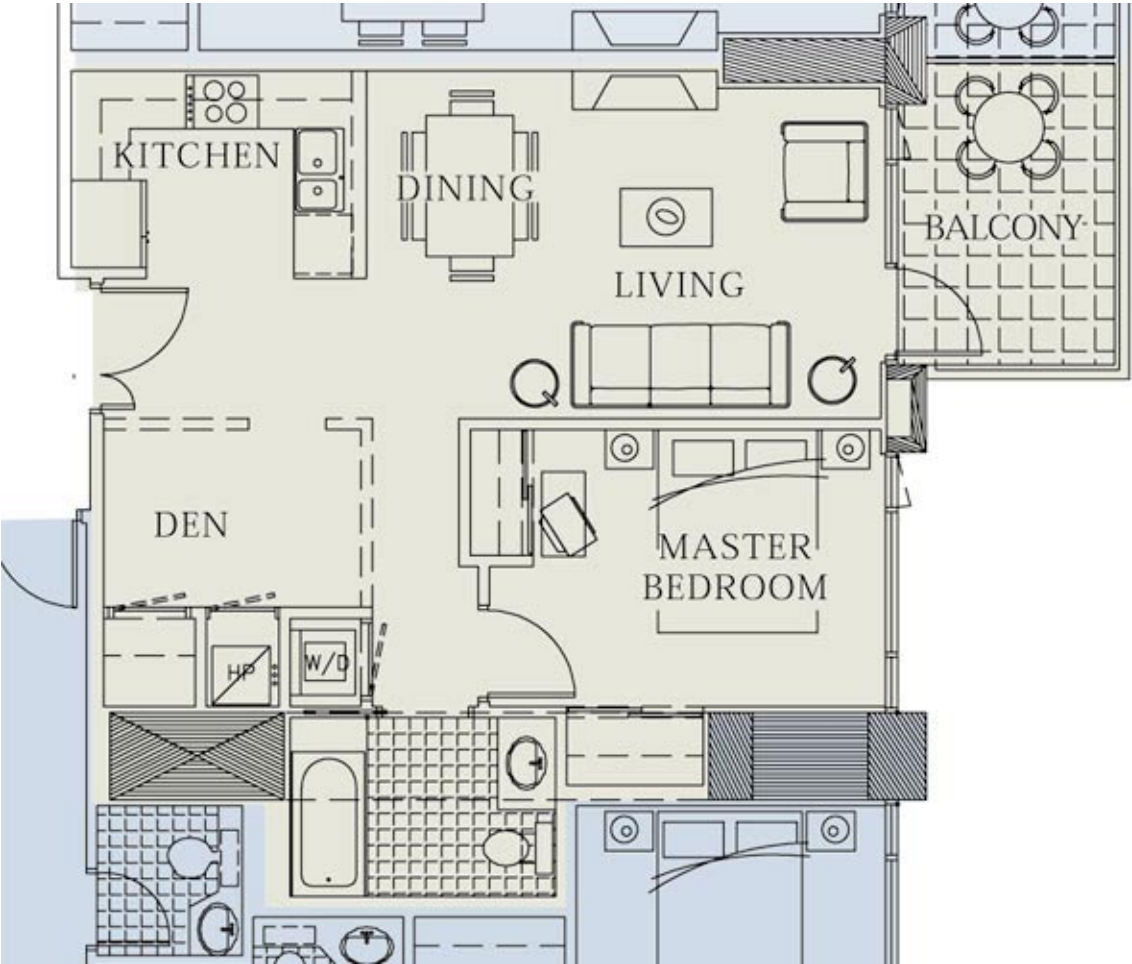
Floors 3 through 10:



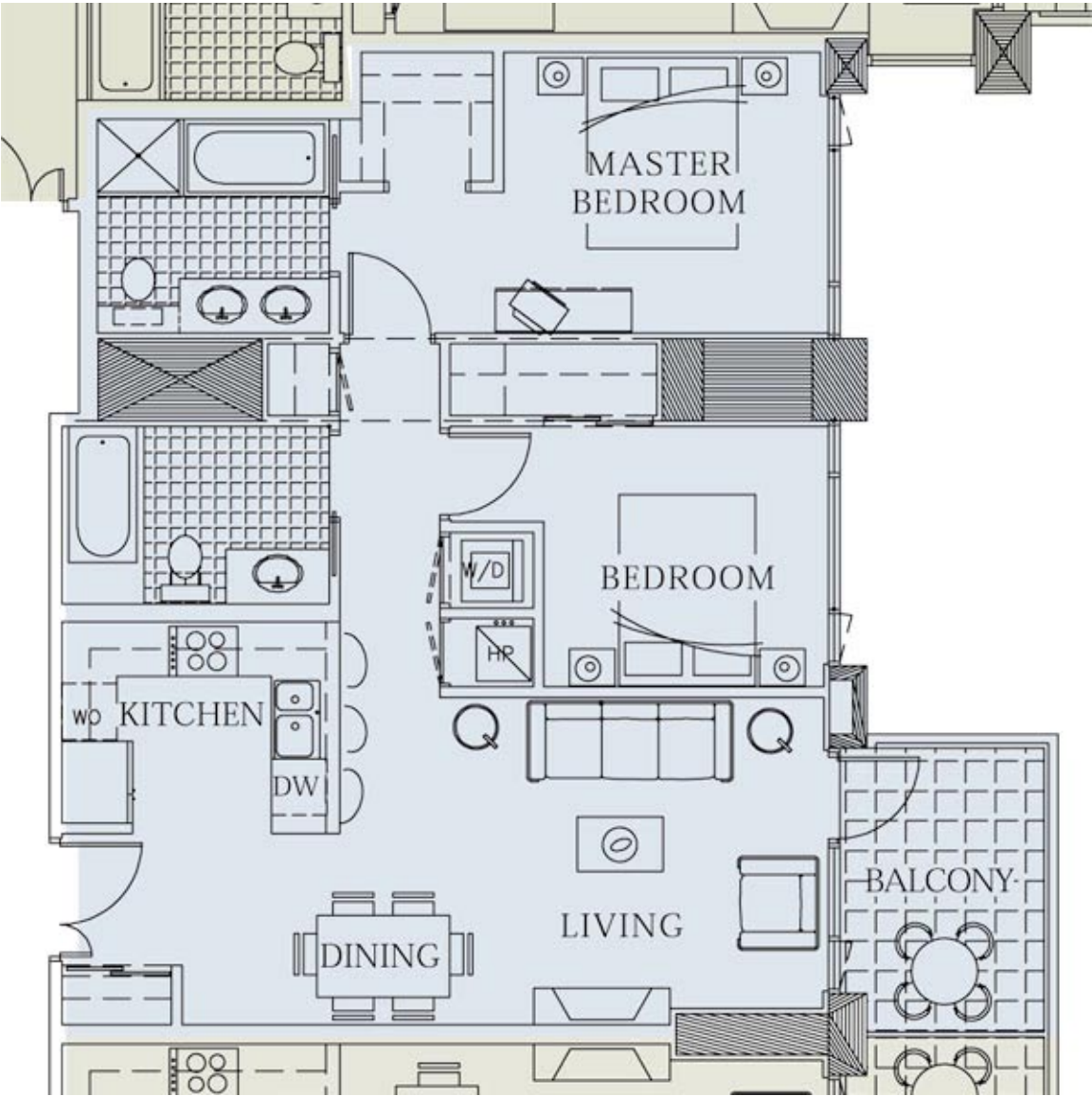
Suite One, Floors Three through Ten



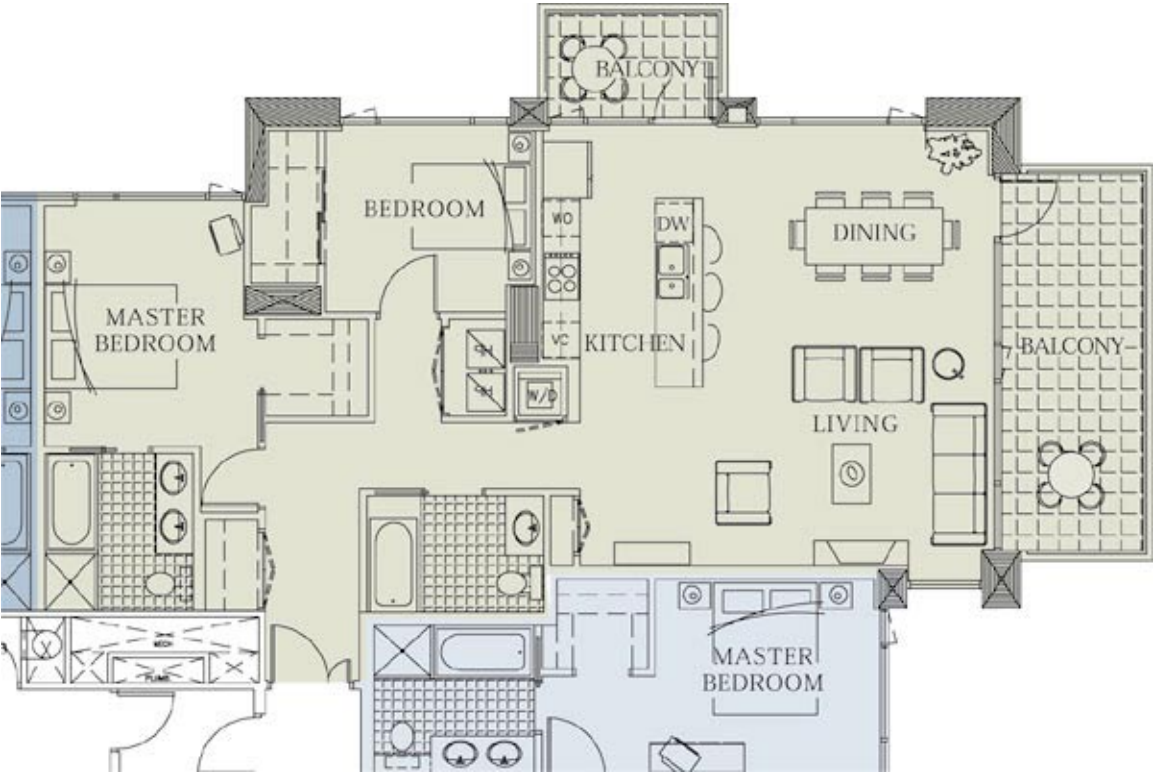
Suite Two, Floors Three through Ten



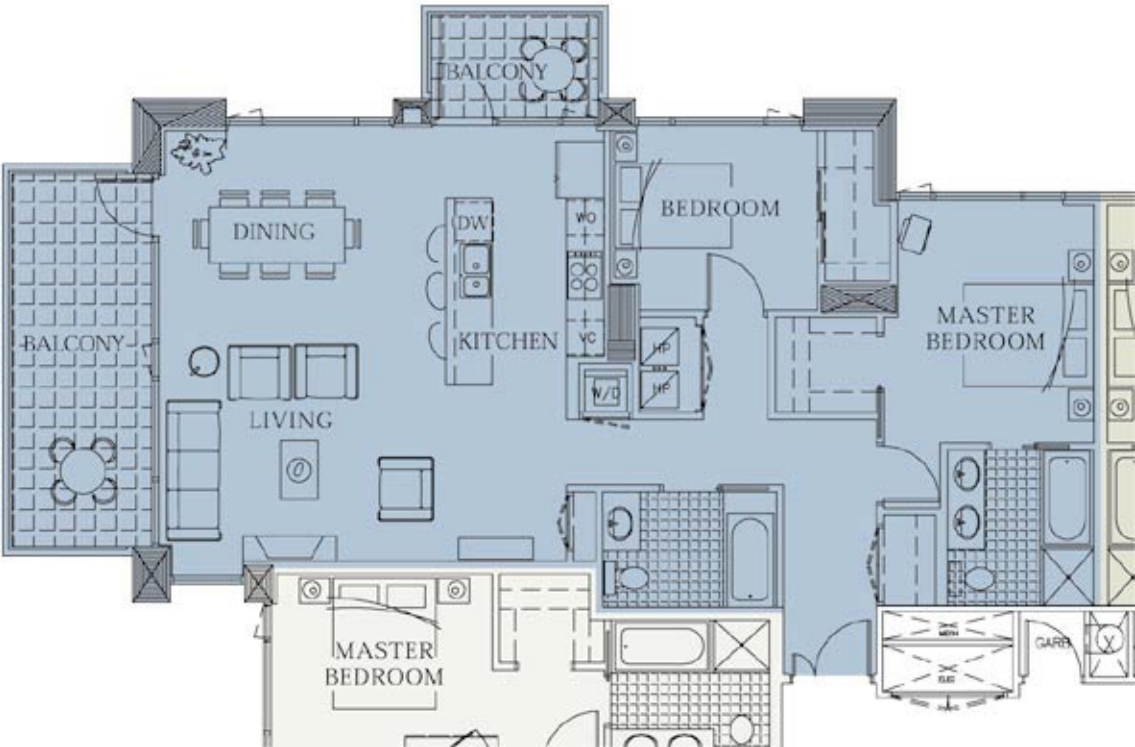
Suite Three, Floors Three through Ten



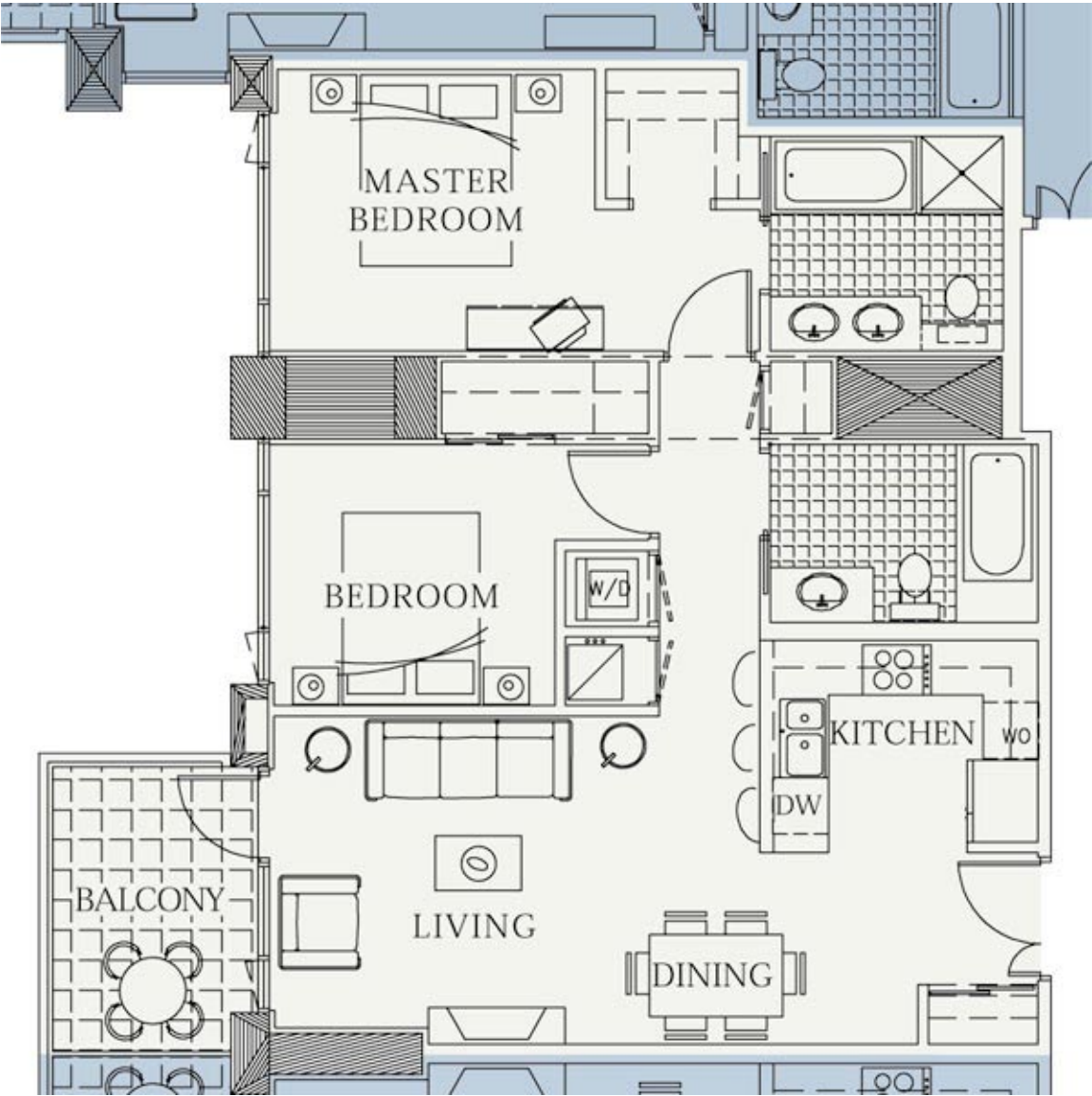
Suite Four, Floors Three through Ten



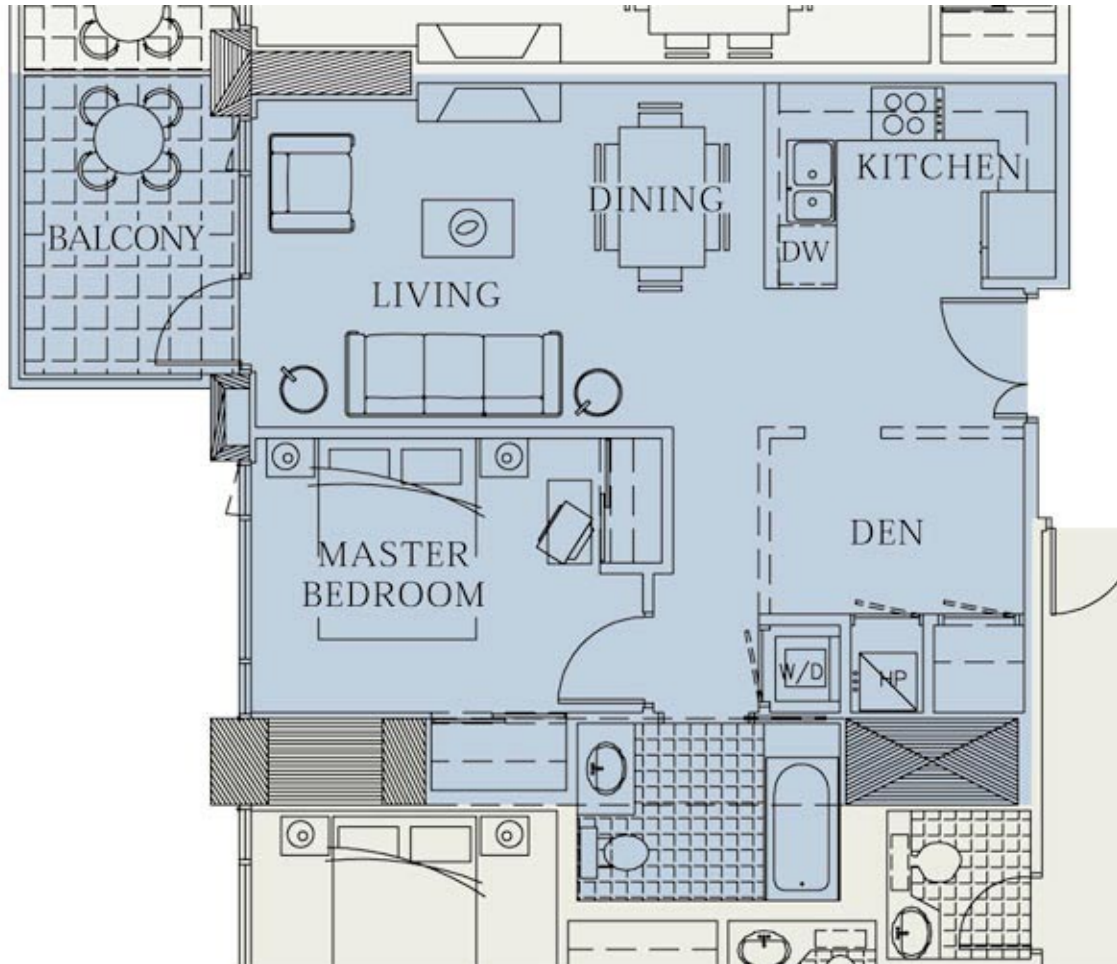
Suite Five, Floors Three through Ten



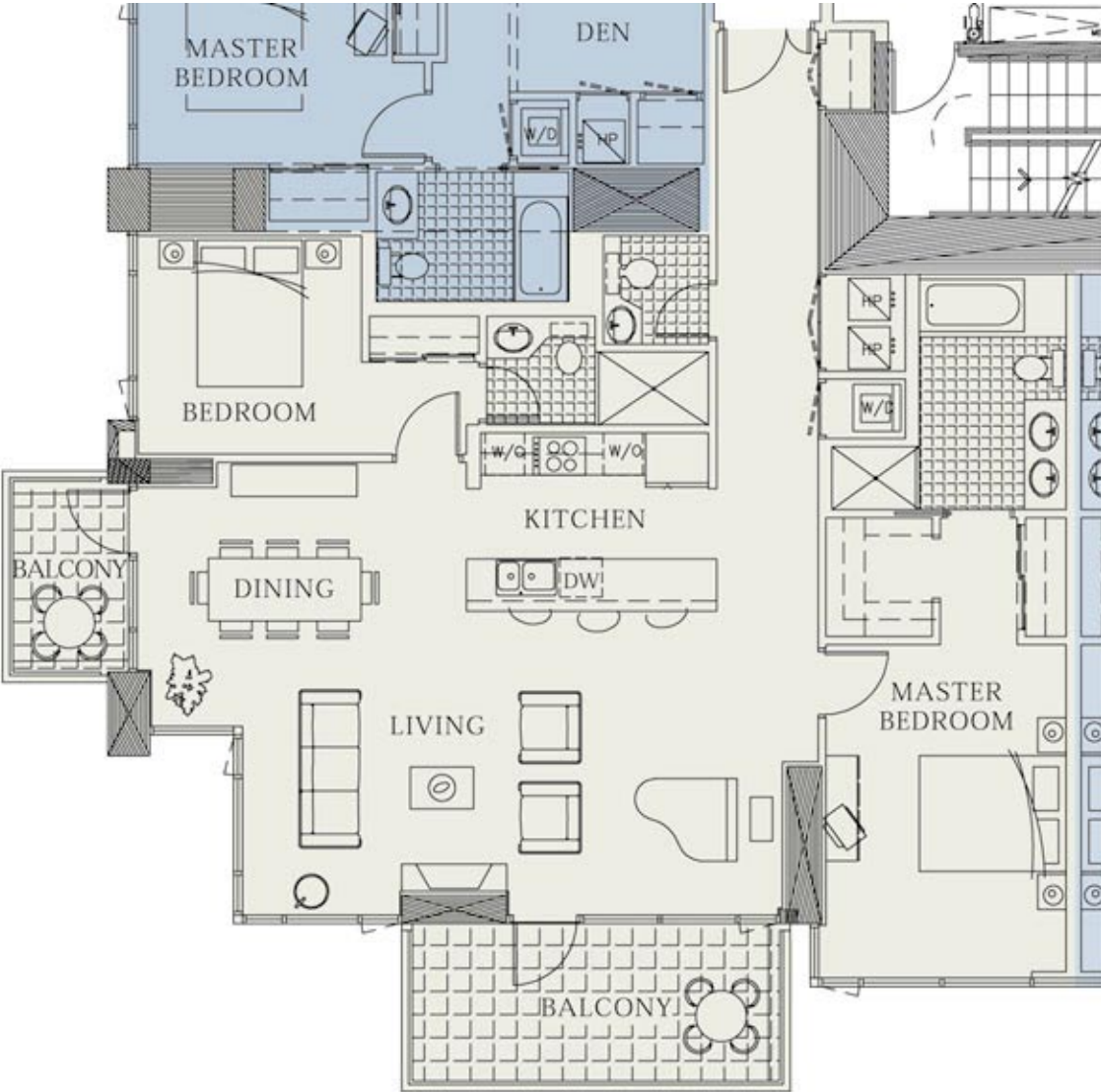
Suite Six, Floors Three through Ten



Suite Seven, Floors Three through Ten

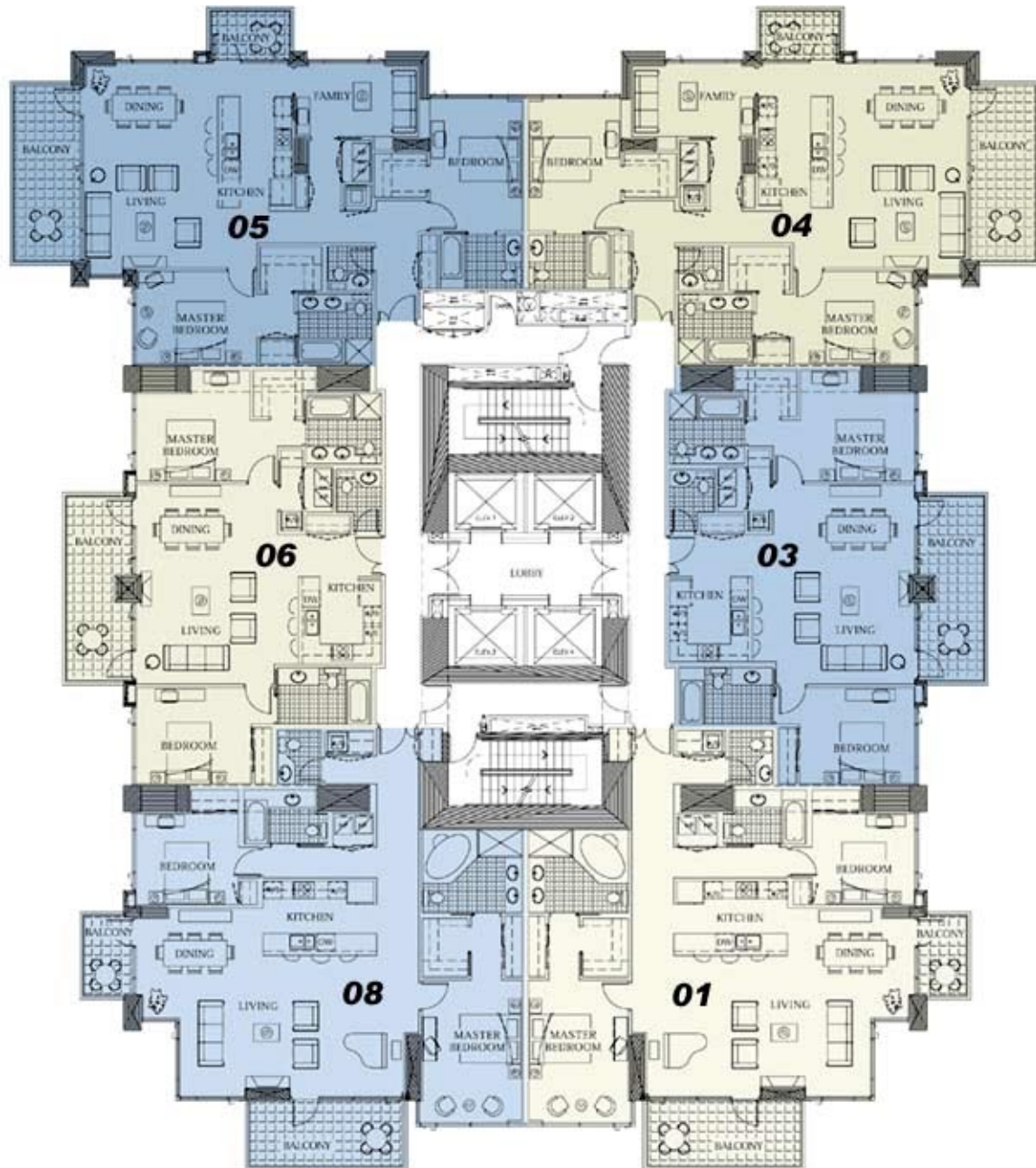


Suite Eight, Floors Three through Ten

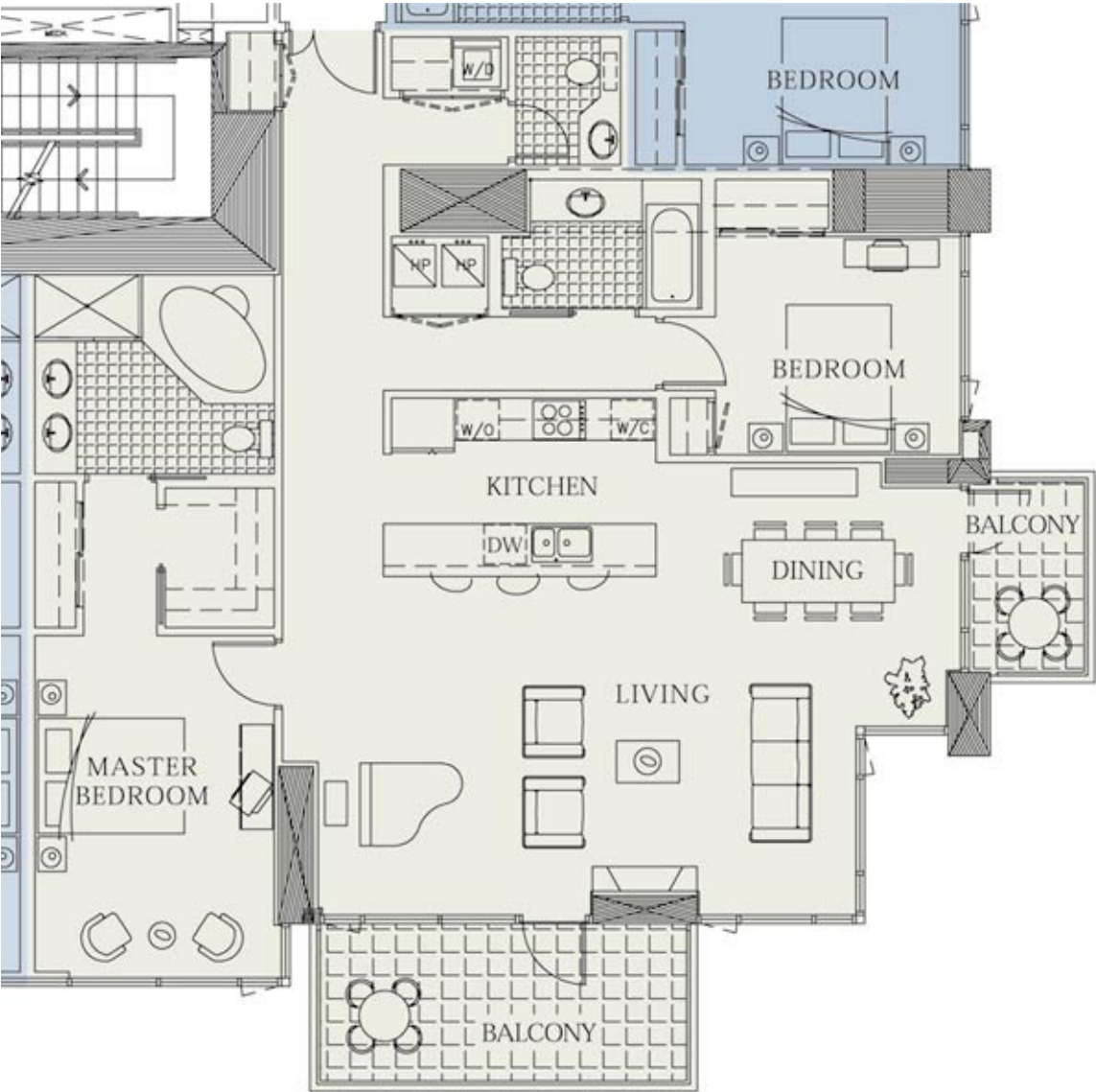


Executive Levels

Floors 11 through 20:



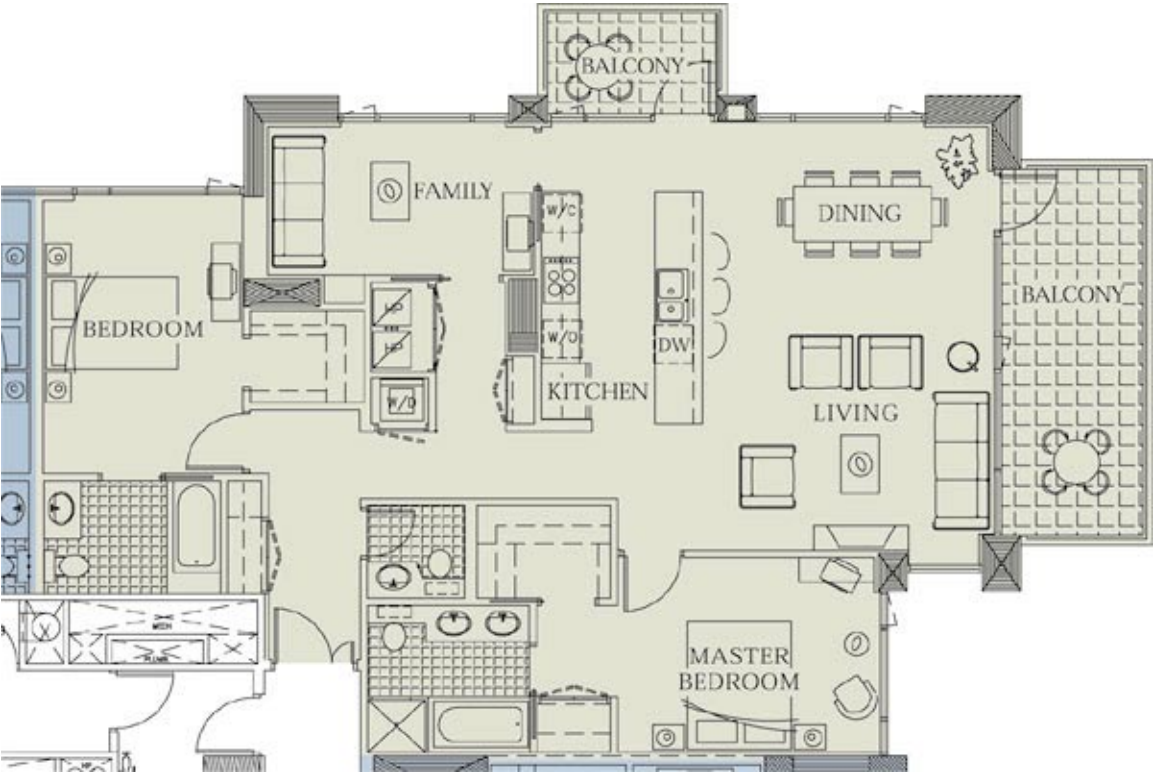
Suite One, Floors Eleven through Twenty



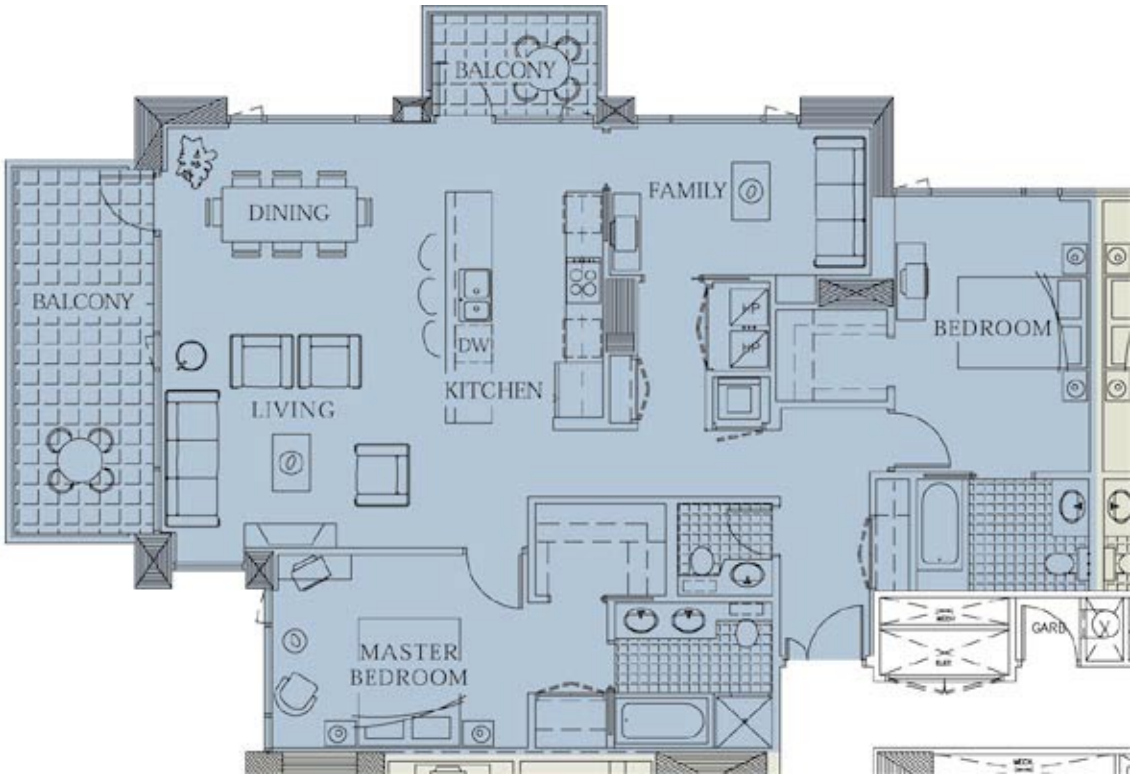
Suite Three, Floors Eleven through Twenty



Suite Four, Floors Eleven through Twenty



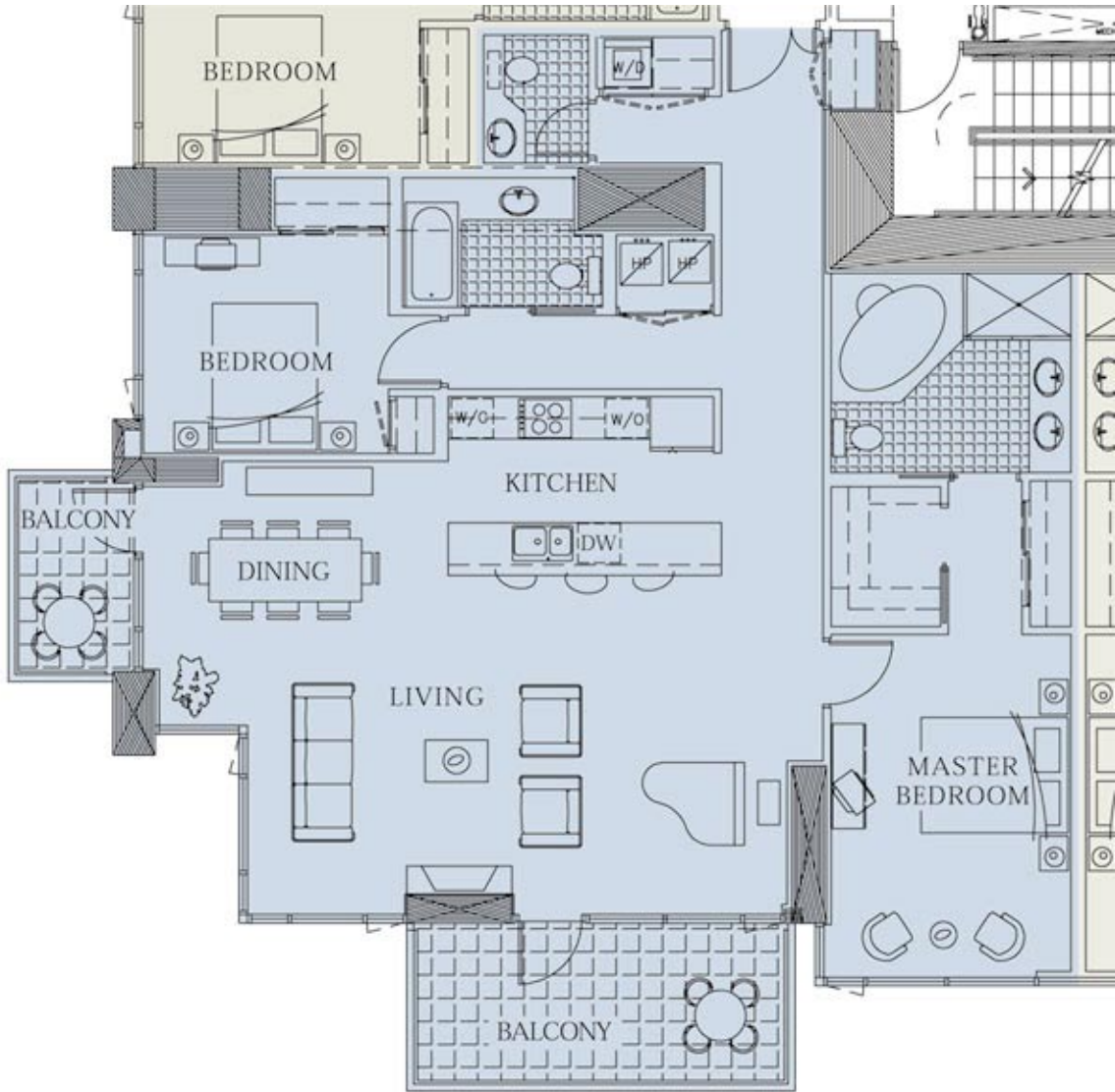
Suite Five, Floors Eleven through Twenty



Suite Six, Floors Eleven through Twenty

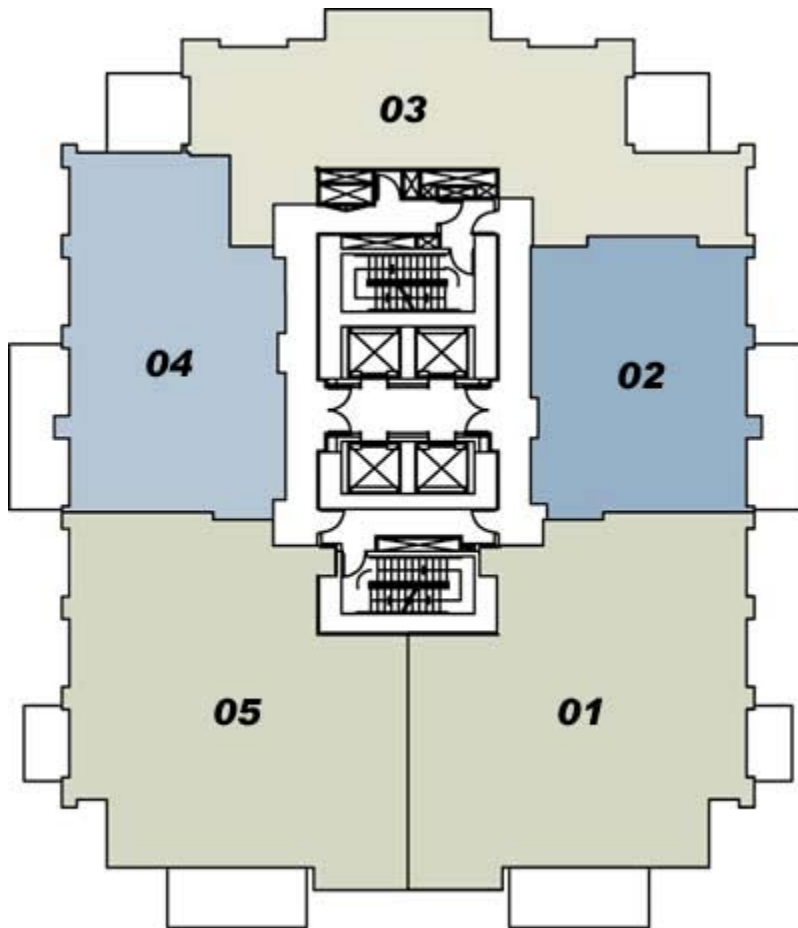


Suite Eight, Floors Eleven through Twenty

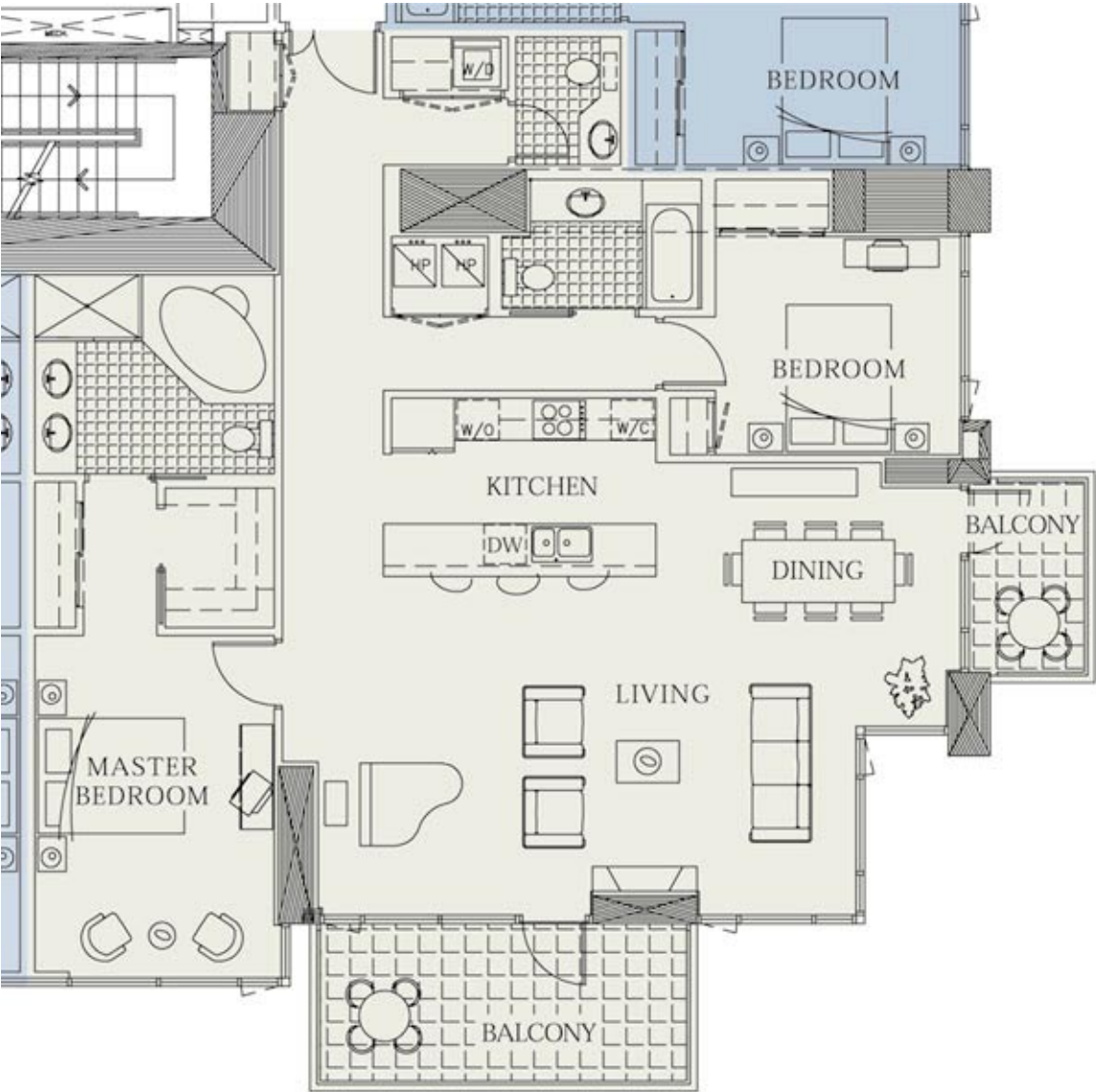


Premier Levels

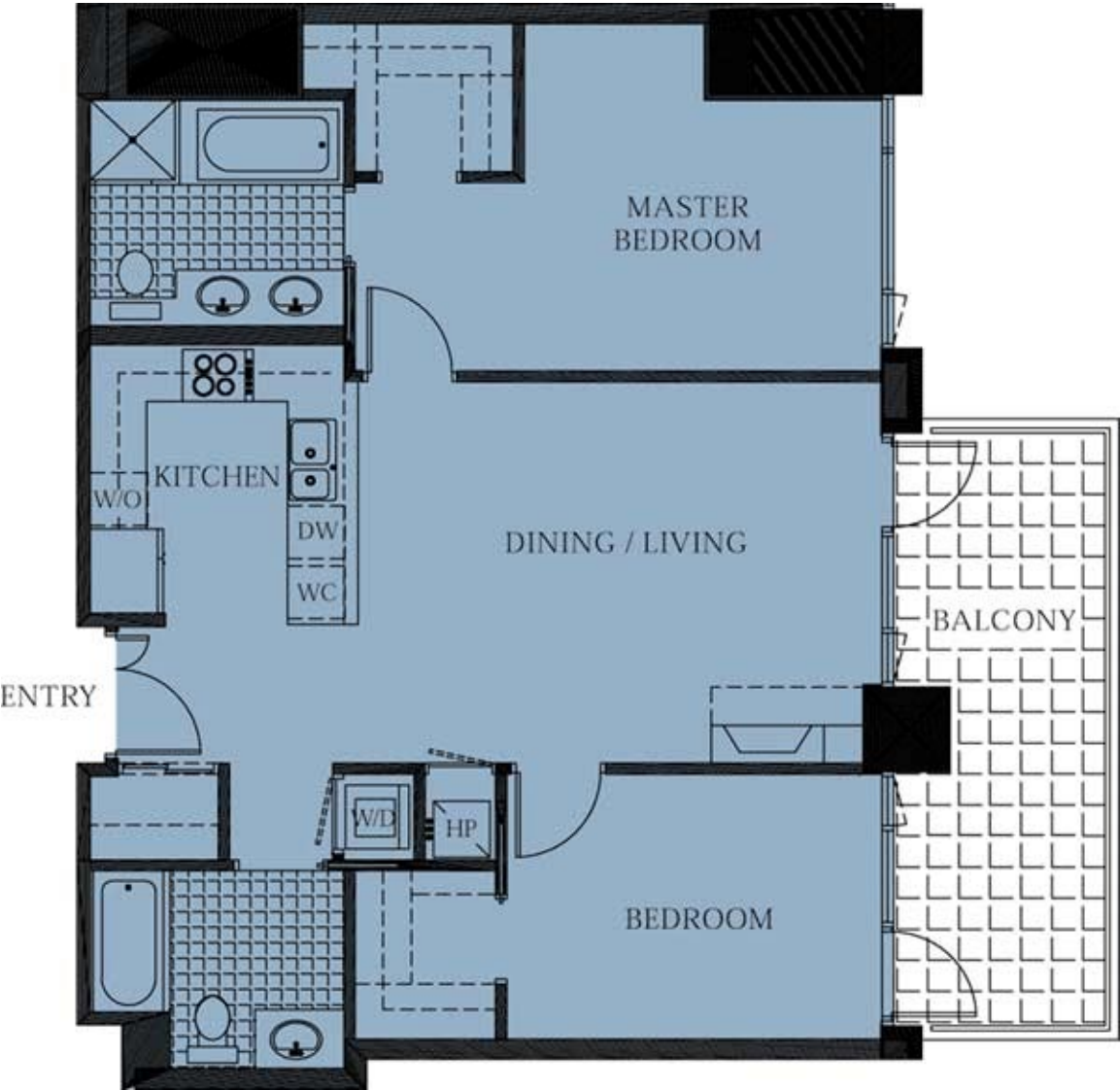
Floors 21 through 26:



Suite One, Floors Twenty-one through Twenty-six



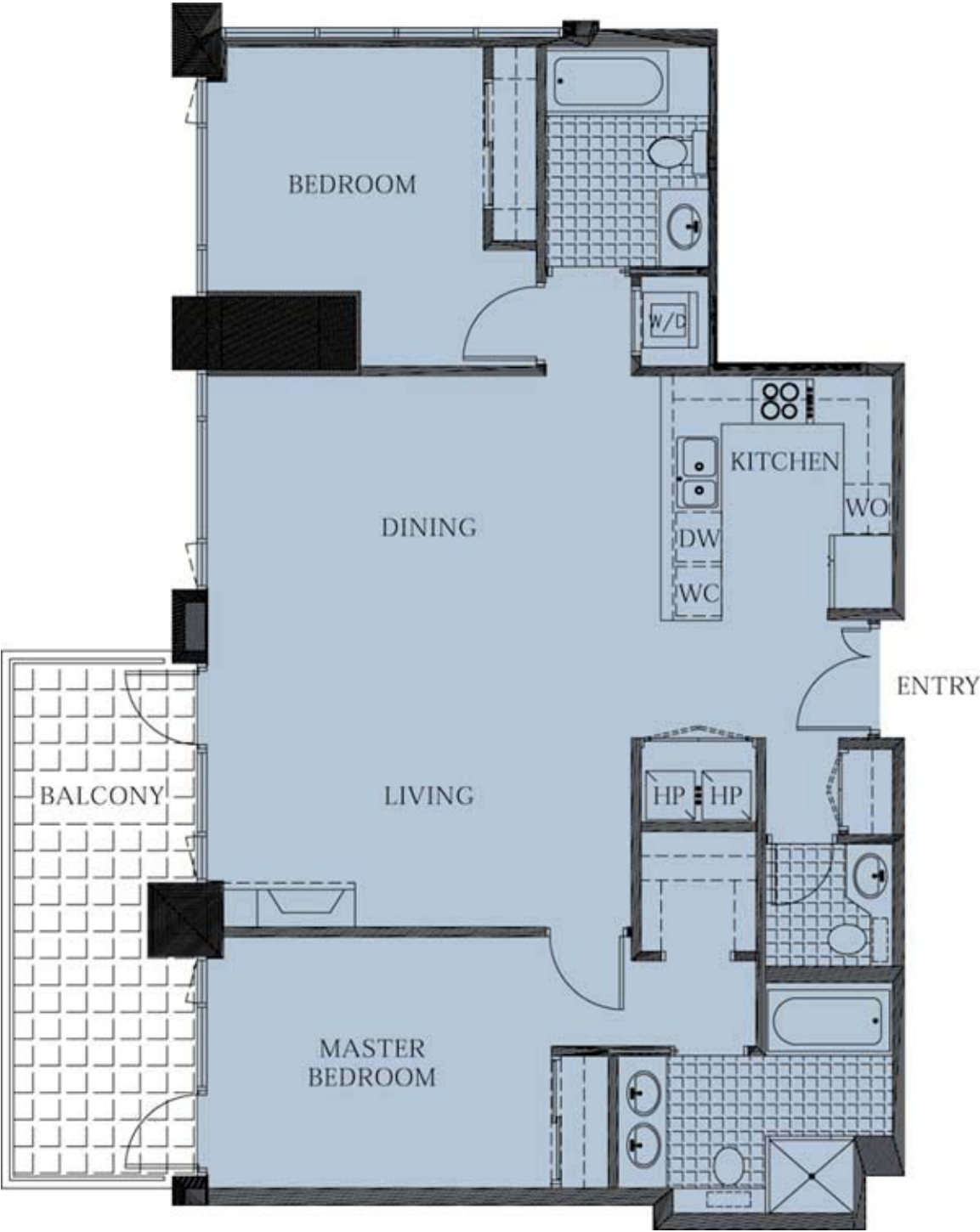
Suite Two, Twenty-one through Twenty-six



Suite Three, Twenty-one through Twenty-six



Suite Four, Twenty-one through Twenty-six

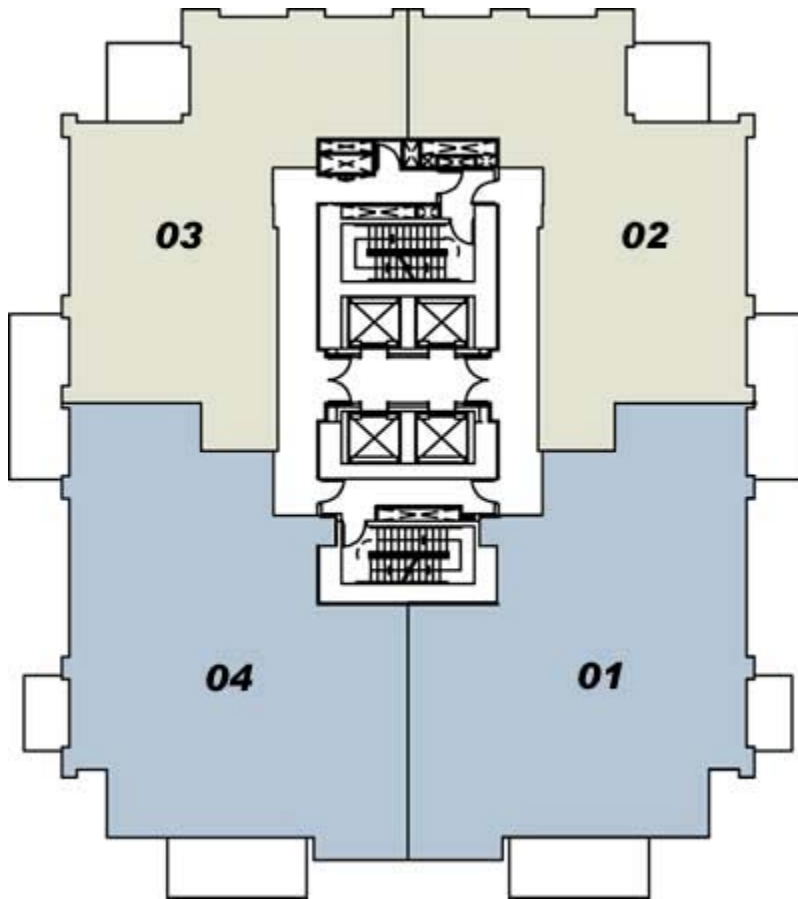


Suite Five, Floors Twenty-one through Twenty-six



Signature Levels

Floors 27 through 30:



Suite One, Floors Twenty-seven through Thirty



Suite Two, Floors Twenty-seven through Thirty



Suite Three, Floors Twenty-seven through Thirty

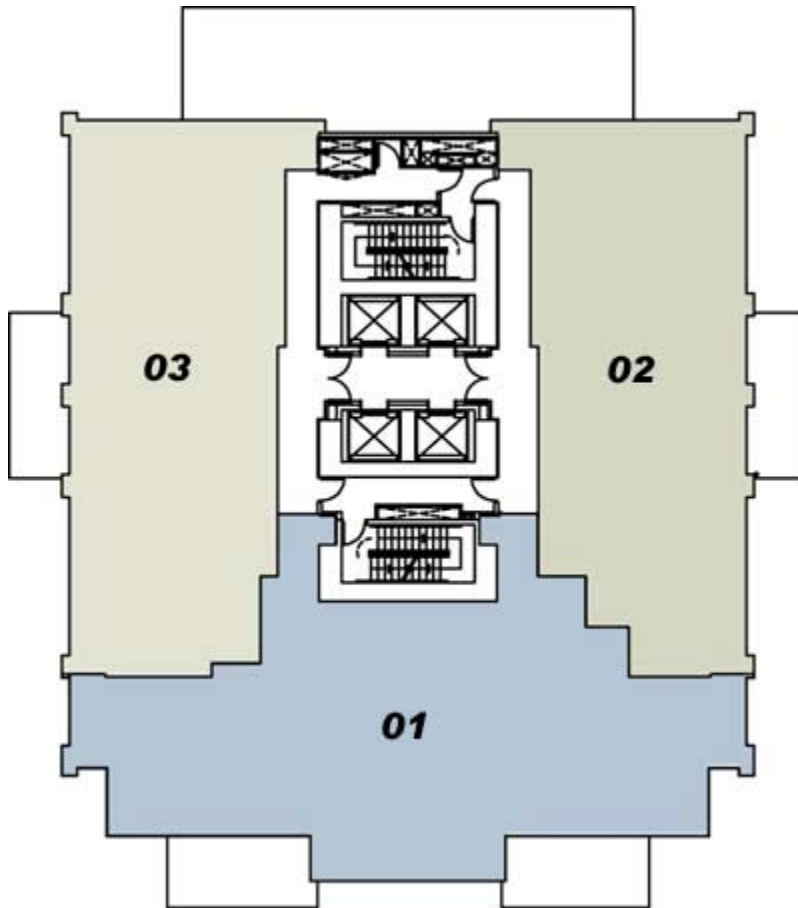


Suite Four, Floors Twenty-seven through Thirty

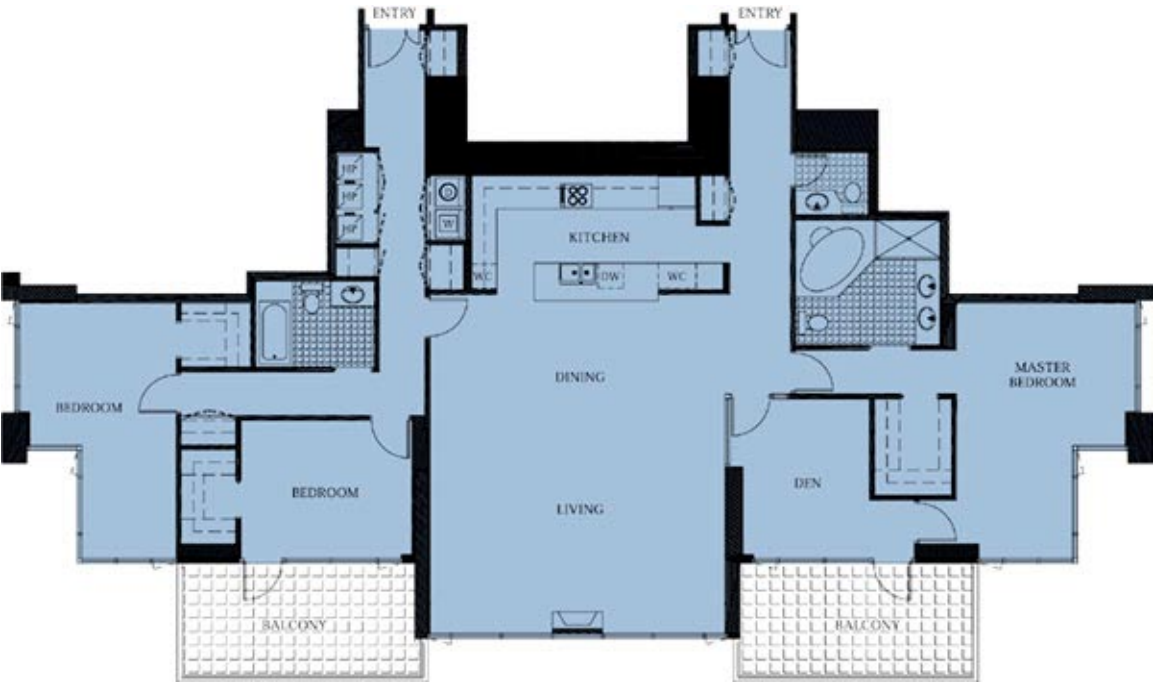


Landmark Levels

Floors 31 and 32:



Suite One, Floors Thirty-one and Thirty-two



Suite Two, Floors Thirty-one and Thirty-two

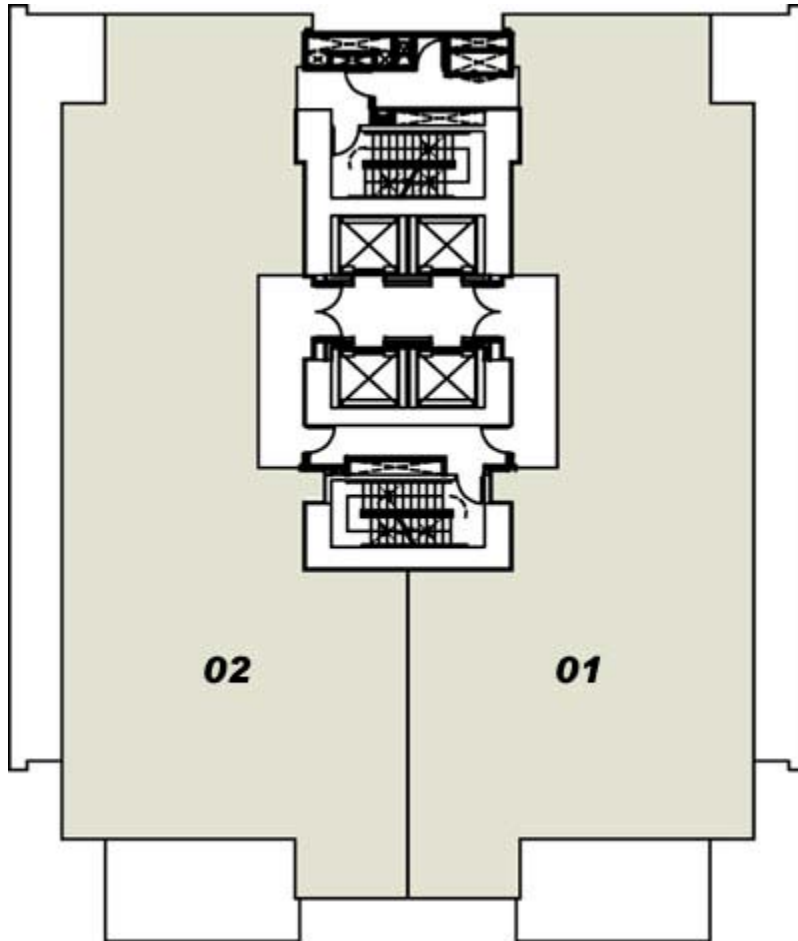


Suite Three, Floors Thirty-one and Thirty-two



Landmark Levels

Floor 33:



Suite One, Floor Thirty-three

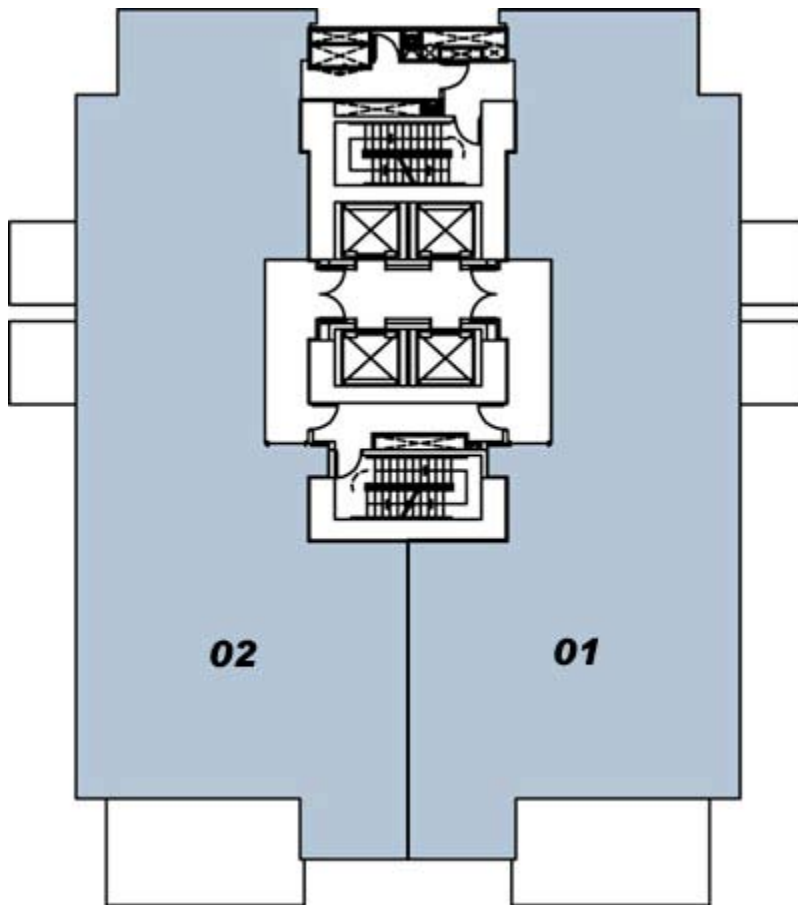


Suite Two, Floor Thirty-three



Pinnacle Levels

Floor 34:



Suite One, Floor Thirty-four

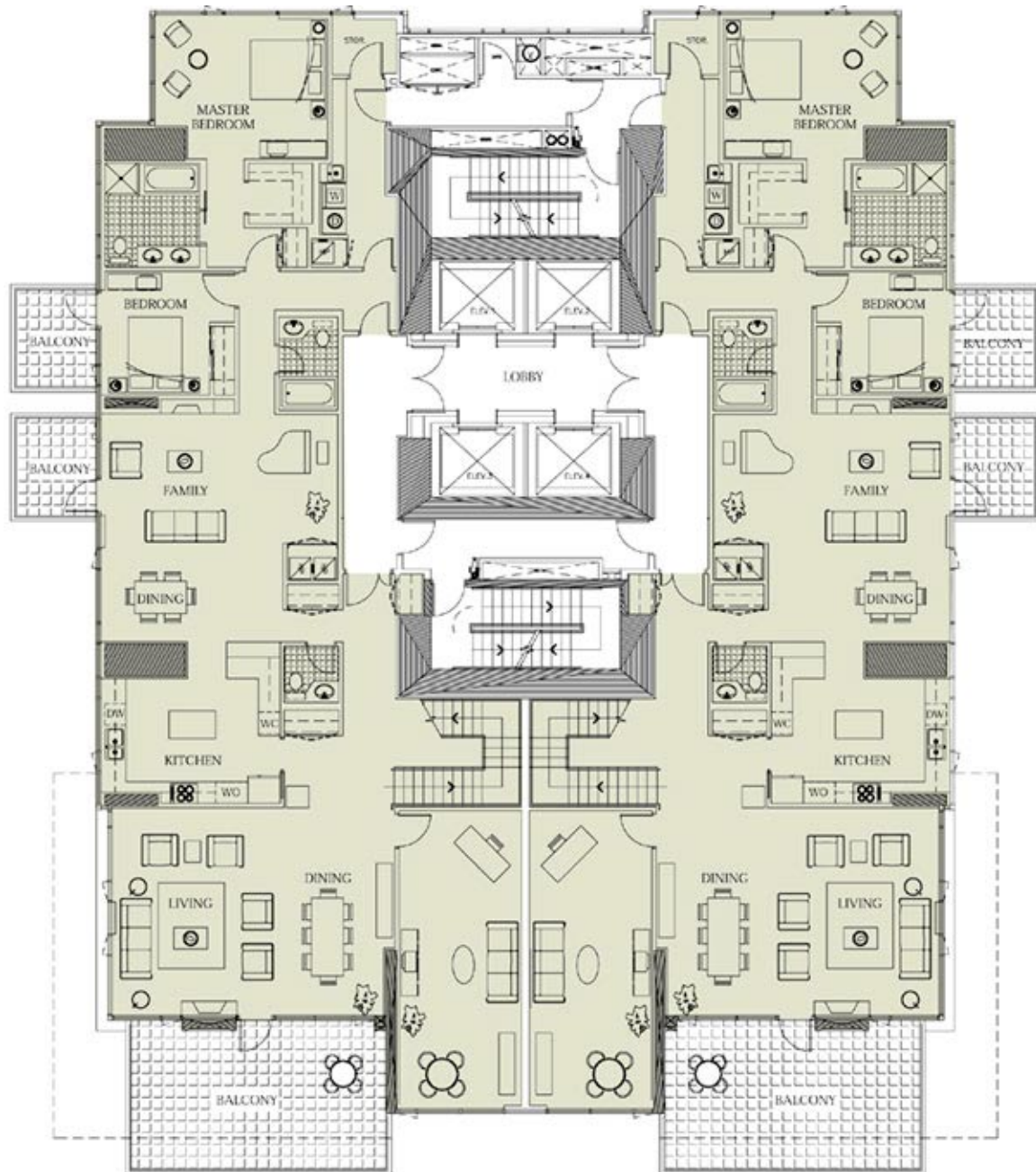


Suite Two, Floor Thirty-four

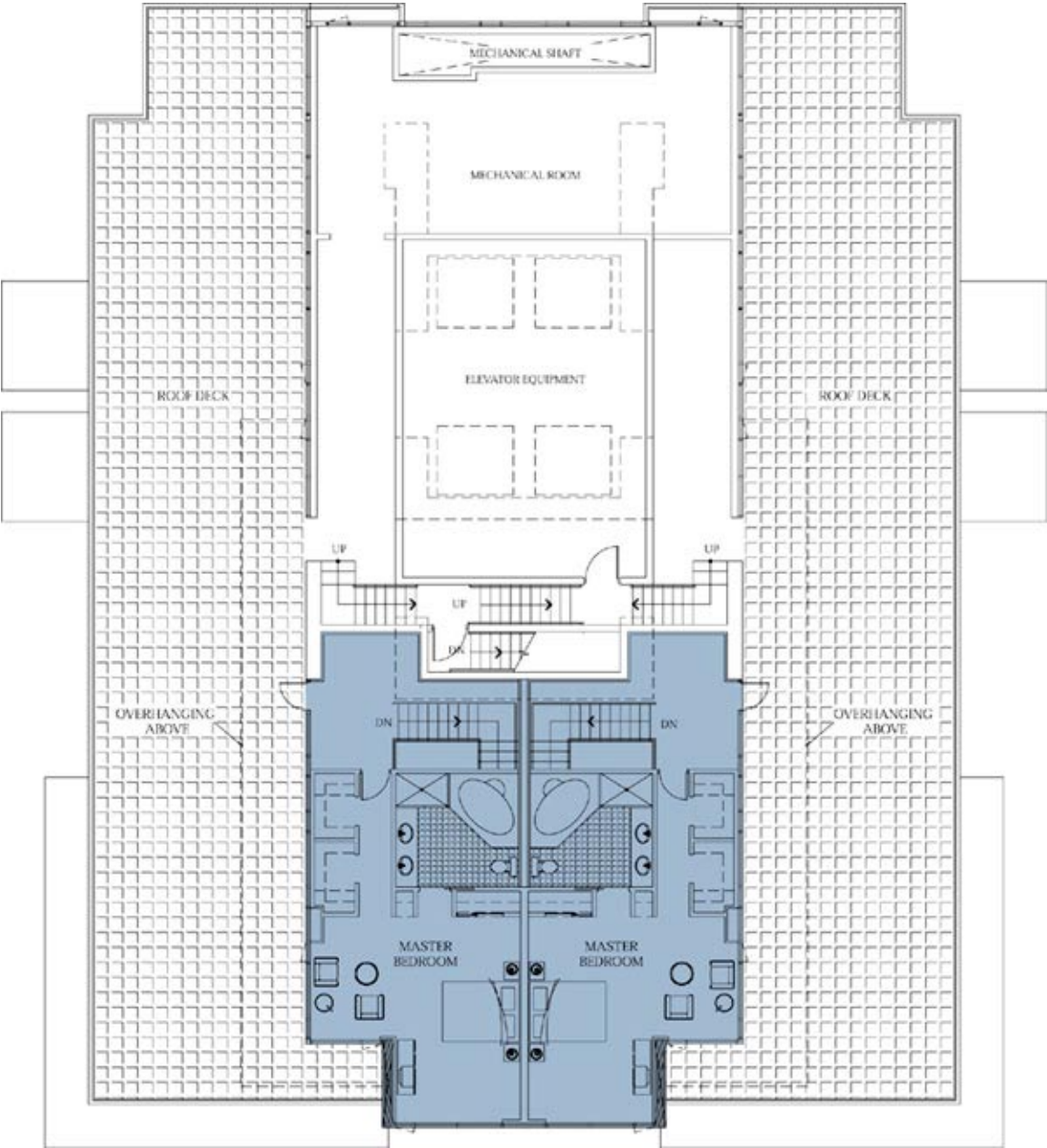


Pinnacle Levels

Suites One and Two, Floors Thirty-five and Thirty-six: (Main Floor)



Suites One and Two, Floors Thirty-five and Thirty-six: (Master Bathroom)



Architectural Details

The most spacious and sophisticated homes in the Prestigious Marina Community

These are homes that make a statement about reaching The Pinnacle. The impression is first cast within the Grand Lobby, a stone and marble triumph filled with overhead natural light where a welcoming concierge greets you by name and verifies visitors' appointments. High-speed elevators whisk you to your floor. Ceiling heights at The Pinnacle range from 10' to 12'. Many residences are 2000 square feet with terrace-sized balconies.

Your home, ideal for Southern California's indoor/outdoor lifestyle and climate, speaks of success and urbanity. Every home feels like a penthouse. The drama and warmth of these urban environments become the perfect setting for entertaining and intimacy. The stunning views and inviting balconies give extraordinary expanse to the already spacious interiors. And everywhere, subtle touches of granite, marble, imported ceramic, polished chrome, brass, designer-quality carpet weaves and polished woods bring continuity, texture and richness.



Building Amenities

THE PINNACLE exhilarates your senses, spirit and body.

Hallmarks of the great urban homes created by Pinnacle International are its signature residents' clubs.

The centerpiece of THE PINNACLE's private club is its sparkling 95' outdoor lap pool that opens onto a secured and gated outdoor pool deck, while the club rooms offer a media lounge with large screen cinema, billiards and games, plus a private guest suite.

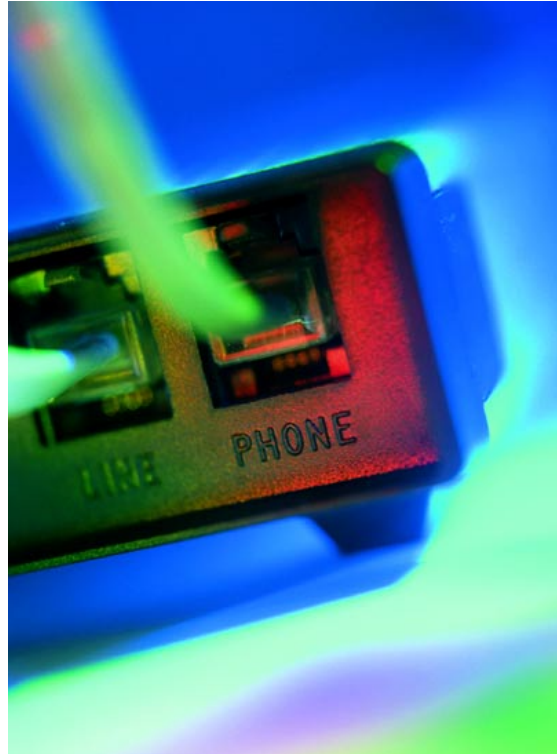


Security and Technologies

THE PINNACLE is a secured and technologically advanced building. Entrances are monitored and controlled by 24-hour concierge services. Access doors are controlled throughout all public areas.

Secured, well-lit underground parking is monitored by video. San Diego is one of the most wired cities in the world with over 71,000 strand miles of broadband fiber optic cable.

THE PINNACLE is connected directly to this backbone of the Internet with each home pre-wired for high-speed Internet access, as well as being pre-wired for cable television outlets - the precursor connections of convergence technologies for in-home communication systems.





Marina Community

At the very heart of downtown 24-hour-a-day San Diego, yet quietly on the bay sheltered from its rush - THE PINNACLE places you on Southern California's most spectacular waterfront of marinas and promenades. Yet you are but a stroll from the gastronomic and entertainment pleasures of the ever-partying Gaslamp District, minutes from fabulous Horton Plaza, a few trolley stops from the opera, ballet and Broadway at the Civic Center. All amenities and shopping are nearby, and it's a short, lovely walk to the Convention Center.



The Pinnacle Team

Architects || Austin Veum Robbins Parshalle \ Hancock Bruckner Eng & Wright

Structural Design || Glotman Simpson Group of Companies

Mechanical Engineers || McPharlane \ Sterling, Cooper & Associates

Electrical Engineers || Milton C. Niederhaus \ Arnold Nemetz & Associates

Interior Design || Co-ordinated Hotel Interiors Ltd.

Marketing Consultant || Anson Realty Ltd.

Graphics/Brochure Design || Outline Graphic Design Inc.

Legal Counsel || Hogan Guiney Dick LLP \ Hecht Solberg Robinsin Goldberg

Construction Management || Pinnacle International

Pinnacle International

"The Pinnacle in San Diego is the culmination of all we have learned designing, planning and constructing landmark buildings in North America. Securing the finest on-the-bay location in Marina has inspired our team to create San Diego's ultimate urban residence, unrivaled by any other in California."

*Michael De Cotiis President & CEO
PINNACLE INTERNATIONAL*



Contact Us

The Sales Center is presently located at
CORNER OF ISLAND AVENUE AND FRONT STREET
Marina > San Diego
TEL: (619) 231-2005 | FAX: (619) 231-2855

You may contact THE PINNACLE Sales Associate via e-mail...

rryan58@sbcglobal.net